



Division of Early Learning Services
Migrant Head Start Programs (MHSP)



**RIVERSIDE COUNTY
OFFICE OF EDUCATION**

**MIGRANT
HEAD START
PROGRAMS**

Serving Children
and Families in Coachella
and Imperial Valleys

ANNUAL REPORT 2019-2020



RIVERSIDE COUNTY OFFICE OF EDUCATION (RCOE)

PLEDGE, MISSION, VISION,
AND CORE VALUES

PLEDGE

Every student in Riverside County will graduate from high school academically and socially prepared for college, the workforce, and civic responsibility.

MISSION

The mission of the Riverside County Office of Education is to ensure the success of all students through extraordinary service, support, and partnerships.

VISION

The vision of the Riverside County Office of Education is to be a collaborative organization characterized by the highest quality employees providing leadership, programs, and services to school districts, schools, and students countywide.

CORE VALUES

- Building Relationships That Promote Trust
- Engaging in Open and Honest Communication
- Focusing on the Needs of Students and Children

MIGRANT HEAD START PROGRAMS

VISION

To promote school readiness, recruit, and enroll children with disabilities, and a strong community and parent involvement.

MISSION

Riverside County Office of Education Migrant Head Start, in partnership with parents and community partners, facilitates access to comprehensive services for eligible migrant/seasonal farm worker children and their families. We provide a foundation for early childhood education, parental awareness and training of child health, growth, and development. We ensure an environment of responsive care-giving that leads towards school-readiness.

RCOE DIVISION OF EARLY LEARNING SERVICES

The RCOE Division of Early Learning Services provides direct oversight of federally funded programs including the Migrant Head Start Programs (MHSP), center based and family child care services and Early Head Start - Child Care Partnerships. These programs serve income-eligible farmworker families in Riverside and Imperial Counties. By focusing on high quality school readiness programming and evidenced-based curricula as well as comprehensive health services, family support services and healthy meals, MHSP remains ever committed to early childhood education and empowering families on their path to self-sufficiency and life-long success.

PROGRAM LEADERSHIP

RIVERSIDE COUNTY OFFICE OF EDUCATION (GRANTEE)

Riverside County Superintendent of Schools: **Dr. Judy White**

Riverside County Deputy Superintendent of Schools: **Dr. Edwin Gomez**

Riverside County Assistant Superintendent of Schools, Division of Early Learning Services: **Sharon Baskett**

Executive Director, Migrant Head Start Programs: **Jose E. Martinez**

2019–2020 POLICY COUNCIL MEMBERS

Chairperson: Cynthia Be

Vice-Chairperson: Vicente Arias

Secretary: Carely Gutierrez

Treasurer: Maria Pantoja

Sergeant-at-Arms: Carolina Felix

FCC Rep: Azucena Rangel

EHS I Rep: Vacant

EHS II Rep: Daisy Flores

EHS III Rep: Raquel Lopez

Community Rep: Nereyda Gerardo

Migrant Head Start Programs (MHSP)

- Migrant Head Start (MHS)
- EHS I-Child Care Partnership Grant (EHS I)
- EHS II- Child Care Partnership Grant (EHS II)
- EHS III- Child Care Partnership Grant (EHS III)

MHSP PROGRAM OPTIONS



As of March 2020, due to COVID-19 Pandemic health order issuance our program transitioned to offer only virtual services.

MHS: FULL DAY CENTER BASED (AGES 2-5)



MHS/EHS I/ EHS II/EHS III: FULL DAY FAMILY CHILD CARE-FCC (AGES 0-5)



FUNDED ENROLLMENT



846
Funded
Enrollment

MHS GRANT

FUNDED ENROLLMENT: 629
CHILDREN SERVED: 632

EHS I GRANT

FUNDED ENROLLMENT: 85
CHILDREN SERVED: 98

EHS II GRANT

FUNDED ENROLLMENT: 82
CHILDREN SERVED: 82

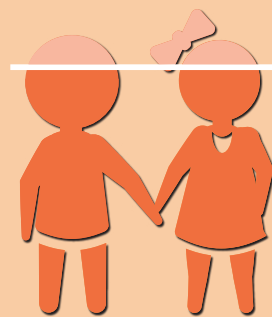
EHS III GRANT

(6/17/19–7/10/20)
FUNDED ENROLLMENT: 50
CHILDREN SERVED: 65



683 FAMILIES
SERVED

(Some families served by multiple programs)

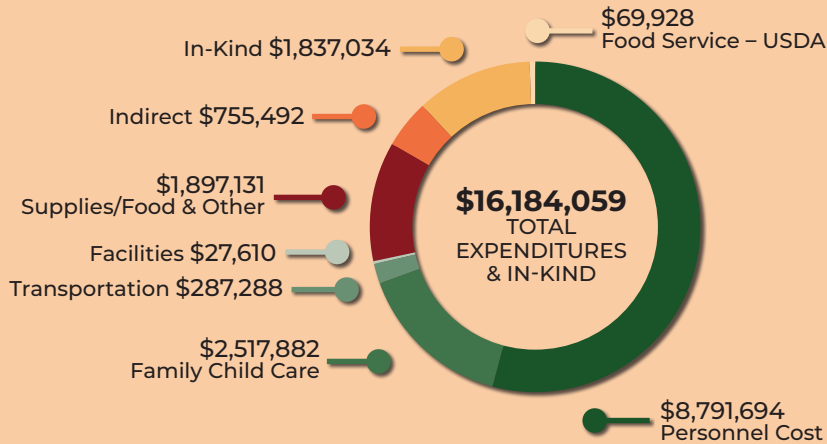


91%
AVERAGE
MONTHLY
ATTENDANCE

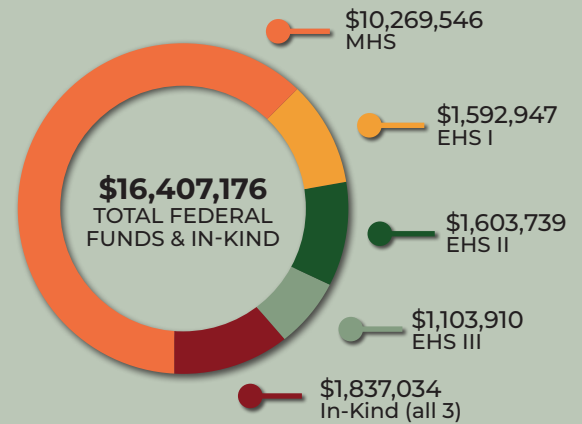
FINANCIALS

The RCOE Fiscal Services Unit supports Migrant Head Start programs with guidance and monthly financial reporting to policy council members and governing body, in addition to meeting regularly with RCOE management team. The effectiveness of the Fiscal Services Unit is reflective in the positive results of annual independent RCOE audits as well as successful OHS Federal Reviews.

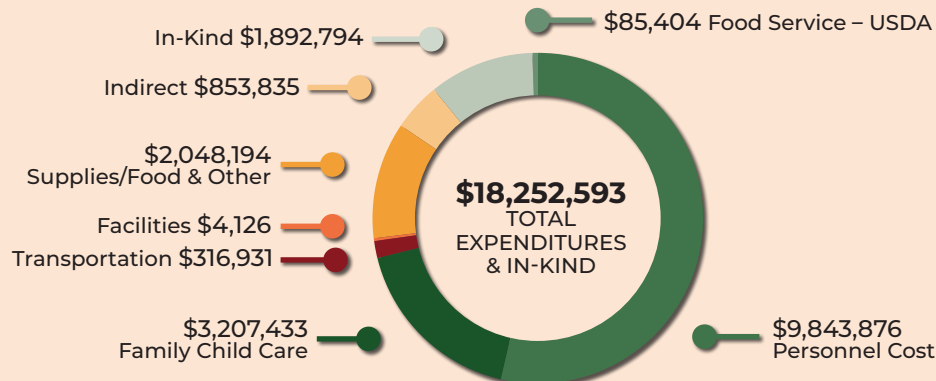
2019-2020 GRANT EXPENDITURES



2019-2020 FUNDING GRANT SOURCES/REVENUE



2020-2021 PROPOSED EXPENDITURES



HEALTH SERVICES

MHS

EHS I

EHS II

EHSIII

PERCENTAGE OF CHILDREN WITH HEALTH INSURANCE



98%



100%



99%



100%



PERCENTAGE OF CHILDREN UP TO DATE ON HEALTH REQUIREMENTS



95%



89%



84%



90%



PERCENTAGE OF CHILDREN WHO RECEIVED DENTAL ASSESSMENTS/ EXAMS



95%



96%



94%



98%



DISABILITIES SERVICES



11.5%

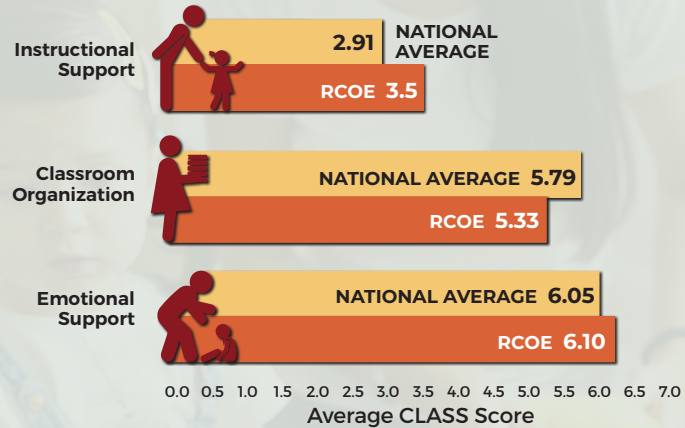
PERCENTAGE OF CHILDREN WITH SPECIAL NEEDS (IEP/IFSP)

SCHOOL READINESS

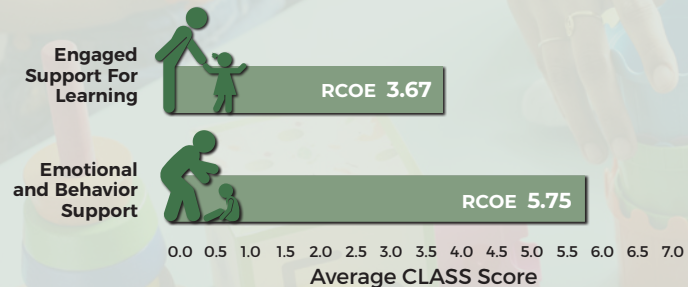
2019–2020 CLASSROOM ASSESSMENT SCORING SYSTEM (CLASS®)

The program utilizes the Classroom Assessment Scoring System (CLASS®) observation instrument that assesses the quality of teacher-child interactions in center-based preschool classrooms. CLASS® includes three domains or categories of teacher-child interactions that support children's learning and development: (1) Emotional Support, (2) Classroom Organization, and (3) Instructional Support. Within each domain are dimensions that capture more specific details about teachers' interactions with children.

2019–2020 CLASS SCORES PRE-K (MIGRANT HEAD START)

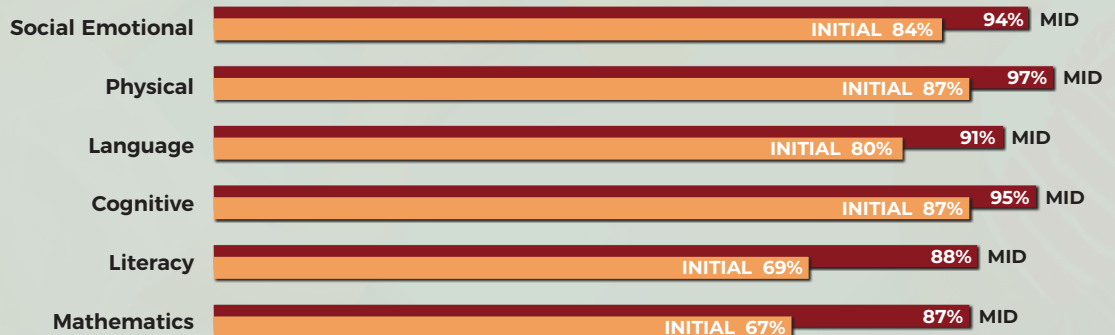


2019–2020 CLASS SCORES TODDLER (MIGRANT HEAD START)



2019–2020 TEACHING STRATEGIES GOLD ONGOING ASSESSMENTS

TEACHING STRATEGIES GOLD is used to measure progress in six areas of development. On average children demonstrated growth and are within age expectation.



PARENT, FAMILY, + COMMUNITY ENGAGEMENT

Starting March 2020 and due to COVID-19, children received virtual and remote services. Families received an iPad with free internet access, diapers, educational materials, meals from local school districts, monthly parent meeting included parenting education workshops.

These are some examples of our Community Partnerships:

- Catholic Charities Foster Grandparent Program
- Brawley Public Library LAMBS
- Clinicas de Salud del Pueblo
- Imperial County Health Department
- Imperial County Behavioral Health
- Riverside County Department of Mental Health
- Woman, Infants and Children (WIC)
- Indio Surgery Center
- Regional Centers (San Diego & Inland)

These are some examples of our Parent Involvement Activities:

- Health & Nutrition Education
- Positive Discipline/Emotional Wellness
- Parent Leadership Training
- Emergency Preparedness
- Support for children with Disabilities
- Mental Health
- School Readiness/Transition
- Adult Education
- Pedestrian Safety
- Child Development
- Immigration Education
- Post-partum Depression
- Goal Setting

Family engagement focuses on culturally and linguistically responsive relationship-building with key family members in a child's life. It requires making a commitment to creating and sustaining an ongoing partnership that supports family well-being. It also honors and supports the parent-child relationships that are central to a child's healthy development, school readiness, and well-being.

2019–2020 PARENT SURVEY HIGHLIGHTS

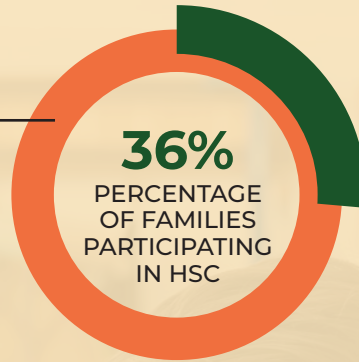
Due to COVID-An end of year parent satisfaction survey was not completed.



2019–2020 HOME SCHOOL CONNECTION (HSC)

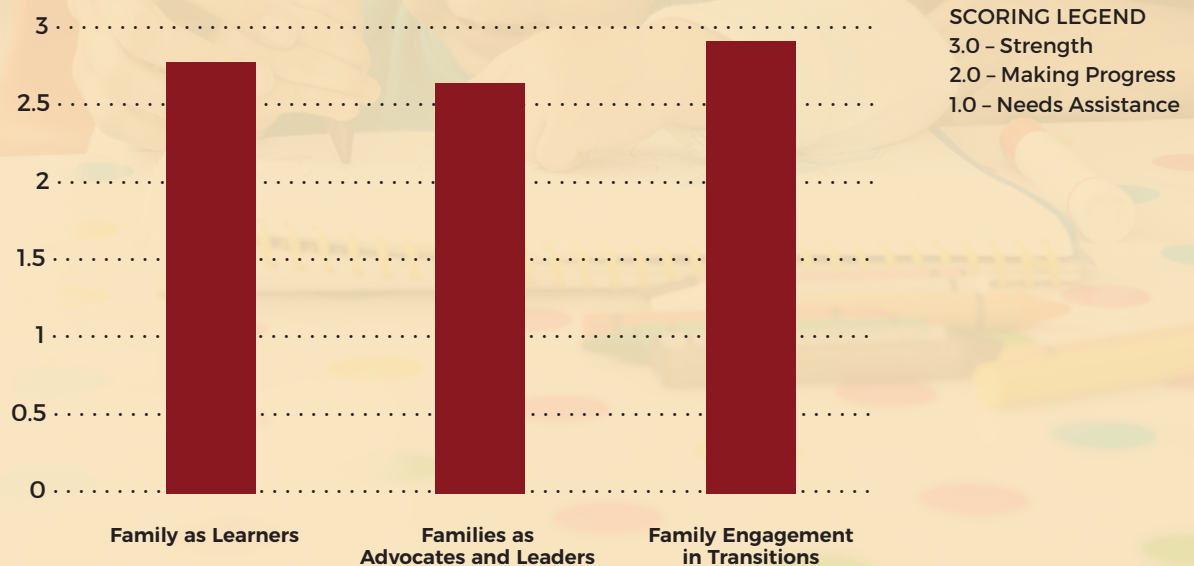
MHSP Total Enrolled Families

683



2019–2020 MHSP FAMILY OUTCOMES 1ST ASSESMENT

As a result of participation in MHSP parent engagement activities and support, family outcomes assessment demonstrates parents have made measurable gains in the following areas:



MIGRANT HEAD START PROGRAM SITES

MIGRANT HEAD START PROGRAMS CENTRAL OFFICE

Division of Early Learning Services

370 Aurora Drive
El Centro, CA 92243
(760) 337-1555 / (760) 337-1478 Fax
www.rcoe.us

BRAWLEY CENTER

1455 East Magnolia
Brawley, CA 92227
(760) 344-9083 / (760) 344-9113 FAX

CALEXICO CENTER

1120 East 7th Street
Calexico, CA 92231
(760) 768-3500 / (760) 768-3502 FAX

EL CENTRO CENTER

375 South 1st Street
El Centro, CA 92243
(760) 337-3940 / (760) 370-0405 FAX

MECCA CENTER

62-900 Lincoln Ave, Suite P
Mecca, CA 92254
(760) 863-3350 / (760) 396-9192 FAX

THERMAL CENTER

87-220 Church Street
Thermal, CA 92274
(760) 863-3250 / (760) 399-1840 FAX

For more information on our Migrant Head Start Programs
please visit us at www.rcoe.us or call us at (760) 337-1555

Find us on  @rcoemhsp