



Division of Early Education Services
Migrant Head Start Programs (MHSP)



RIVERSIDE COUNTY
OFFICE OF EDUCATION
MIGRANT HEAD START
PROGRAMS

Serving Children and Families
in Coachella and Imperial Valleys



ANNUAL REPORT 2021-2022



RIVERSIDE COUNTY OFFICE OF EDUCATION (RCOE)

PLEDGE, MISSION, VISION,
AND CORE VALUES

PLEDGE

Every student in Riverside County will graduate from high school academically and socially prepared for college, the workforce, and civic responsibility.

MISSION

The mission of the Riverside County Office of Education is to ensure the success of all students through extraordinary service, support, and partnerships.

VISION

The vision of the Riverside County Office of Education is to be a collaborative organization characterized by the highest quality employees providing leadership, programs, and services to school districts, schools, and students countywide.

CORE VALUES

- Building Relationships That Promote Trust
- Engaging in Open and Honest Communication
- Focusing on the Needs of Students and Children

MIGRANT HEAD START PROGRAMS

VISION

To promote school readiness, recruit, and enroll children with disabilities, and a strong community and parent involvement.

MISSION

Riverside County Office of Education Migrant Head Start, in partnership with parents and community partners, facilitates access to comprehensive services for eligible migrant/seasonal farm worker children and their families. We provide a foundation for early childhood education, parental awareness and training of child health, growth, and development. We ensure an environment of responsive care-giving that leads towards school-readiness.

RCOE DIVISION OF EARLY EDUCATION SERVICES

The RCOE Division of Early Education Services provides direct oversight of federally funded programs including the Migrant Head Start Programs (MHSP), center based and family child care services and Early Head Start - Child Care Partnerships. These programs serve income-eligible farmworker families in Riverside and Imperial Counties. By focusing on high-quality school readiness programming and evidenced-based curricula as well as comprehensive health services, family support services and healthy meals, MHSP remains ever committed to early childhood education and empowering families on their path to self-sufficiency and life-long success.

PROGRAM LEADERSHIP

RIVERSIDE COUNTY OFFICE OF EDUCATION (GRANTEE)

Riverside County Superintendent of Schools: **Dr. Edwin Gomez**

Riverside County Deputy Superintendent of Schools: **Dr. Ruth Pérez**

Riverside County Assistant Superintendent of Schools, Division of Early Education Services: **JoAnne Lauer**

Executive Director, Migrant Head Start Programs: **Jose E. Martinez**

2021–2022 POLICY COUNCIL MEMBERS

Chairperson: Cynthia Be

Vice-Chairperson: Melqui Lopez

Secretary: Carely Gutierrez

Treasurer: Maria Perez

Treasurer Alt: Wendy Lopez

Sergeant-at-Arms: Daisy Flores

FCC Rep: Vilma Valenzuela

EHS I Rep: Mirian Herrera

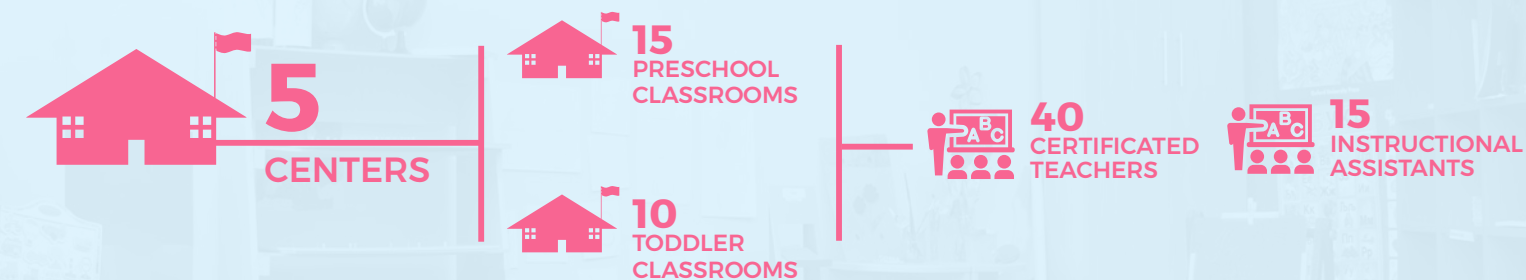
Community Rep: Vacant

Migrant Head Start Programs (MHSP)

**Please note EHS I, II & III was consolidated into EHS I*

MHSP PROGRAM OPTIONS

MHSP: FULL DAY CENTER BASED (AGES 2–5)

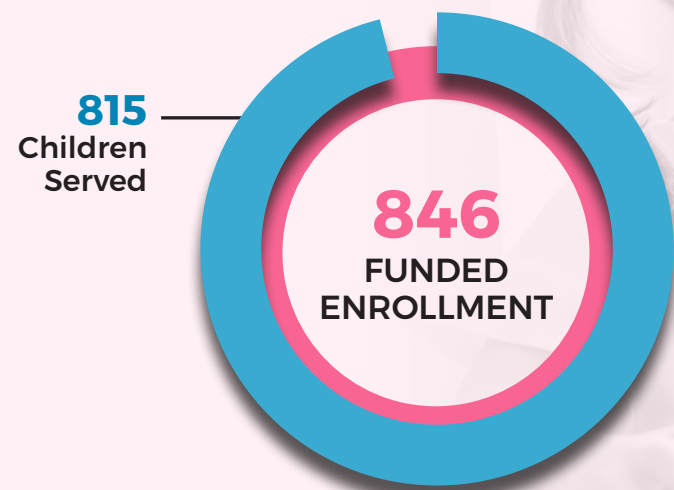


MHSP/EHS I/EHS II/EHS III: FULL DAY FAMILY CHILD CARE-FCC (AGES 0–5)



FUNDED ENROLLMENT

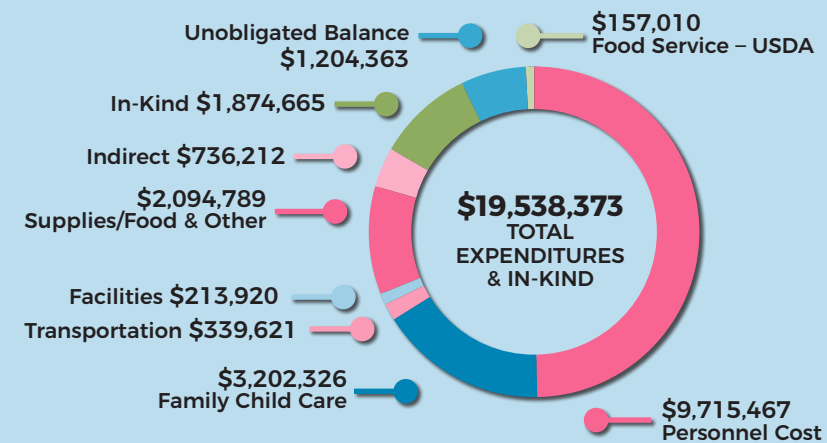
MHSP GRANT



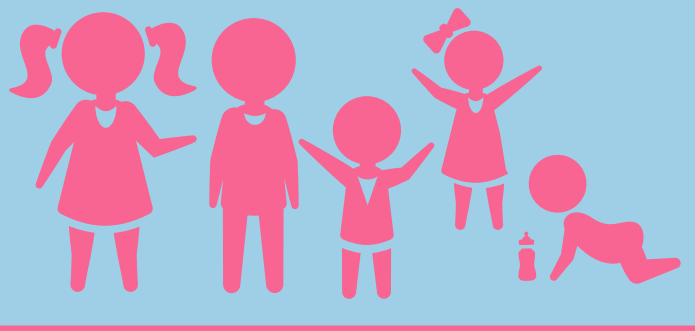
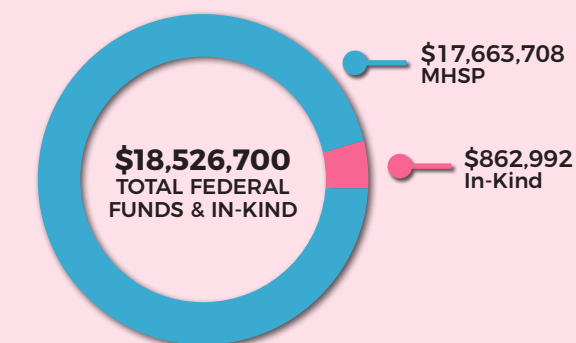
FINANCIALS

The RCOE Fiscal Services Unit supports Migrant Head Start programs with guidance and monthly financial reporting to policy council members and governing body, in addition to meeting regularly with RCOE management team. The effectiveness of the Fiscal Services Unit is reflective in the positive results of annual independent RCOE audits as well as successful OHS Federal Reviews.

2021-2022 GRANT EXPENDITURES

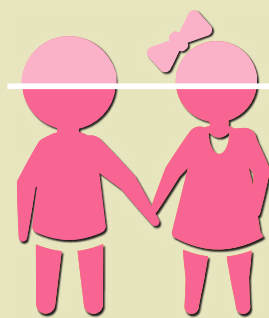


2021-2022 FUNDING GRANT SOURCES/REVENUE



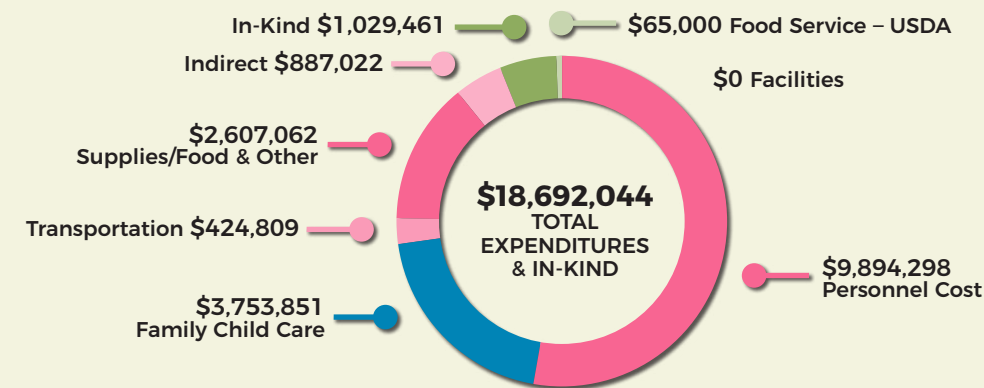
657 FAMILIES SERVED

(Some families served by multiple programs)

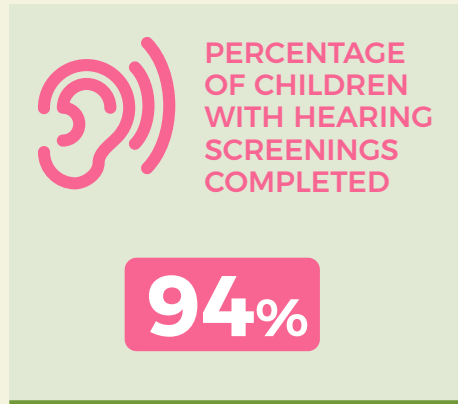
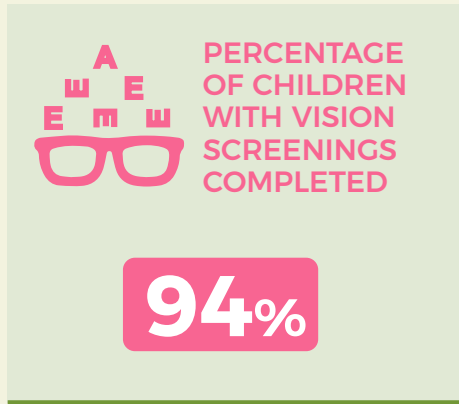
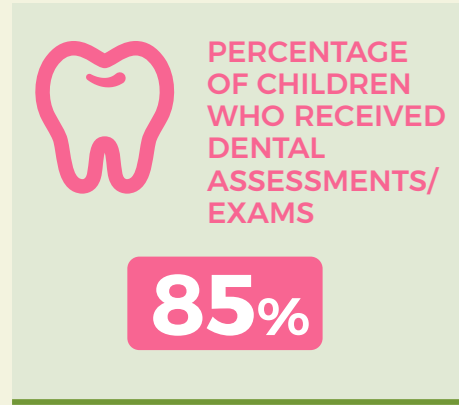
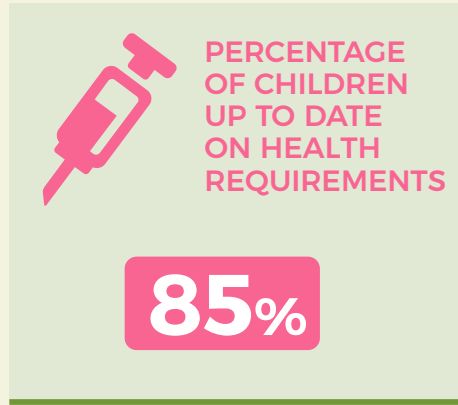


81%
AVERAGE MONTHLY ATTENDANCE

2022-2023 PROPOSED EXPENDITURES



HEALTH SERVICES

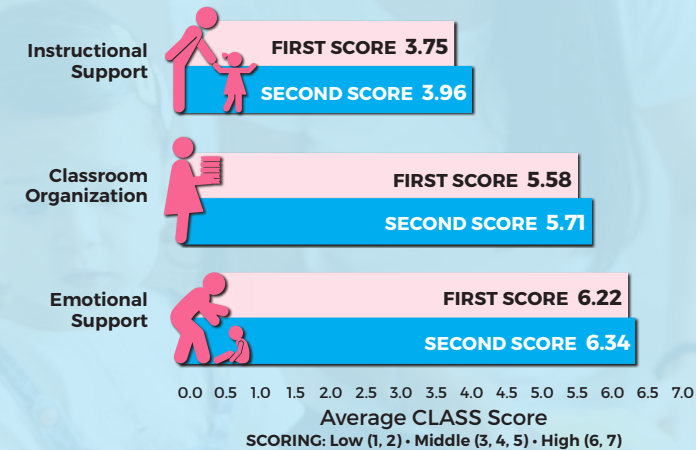


SCHOOL READINESS

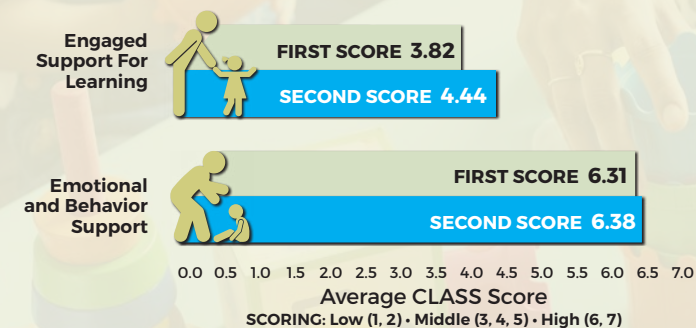
2021-2022 CLASSROOM ASSESSMENT SCORING SYSTEM (CLASS®)

The program utilizes the Classroom Assessment Scoring System (CLASS®) observation instrument that assesses the quality of teacher-child interactions in center-based preschool classrooms. CLASS® includes three domains or categories of teacher-child interactions that support children's learning and development: (1) Emotional Support, (2) Classroom Organization, and (3) Instructional Support. Within each domain are dimensions that capture more specific details about teachers' interactions with children.

2021-2022 CLASS SCORES PRE-K (MIGRANT HEAD START)



2021-2022 CLASS SCORES TODDLER (MIGRANT HEAD START)



DISABILITIES SERVICES



2021-2022 TEACHING STRATEGIES GOLD ONGOING ASSESSMENTS

TEACHING STRATEGIES GOLD is used to measure progress in six areas of development. On average children demonstrated growth and are within age expectation.



PARENT, FAMILY, + COMMUNITY ENGAGEMENT

Family engagement focuses on culturally and linguistically responsive relationship-building with key family members in a child's life. It requires making a commitment to creating and sustaining an ongoing partnership that supports family well-being. It also honors and supports the parent-child relationships that are central to a child's healthy development, school readiness, and well-being.

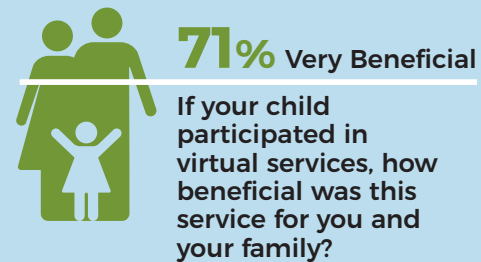
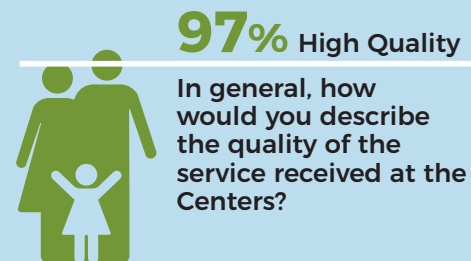
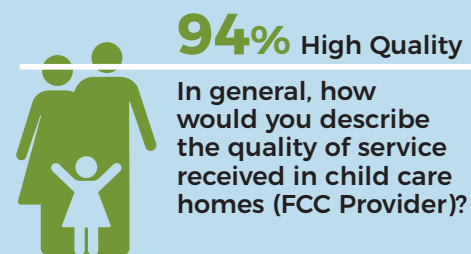
These are some examples of our Community Partnerships:

- Catholic Charities Foster Grandparent Program
- Inner Care
- Loma Linda University
- Borrego Health
- Imperial County Health Department
- Imperial County Behavioral Health
- Riverside County Department of Mental Health
- Woman, Infants and Children (WIC)
- Indio Surgery Center
- UCLA School of Dentistry
- Bright Light Dental
- Regional Centers (San Diego & Inland)

These are some examples of our Parent Involvement Activities:

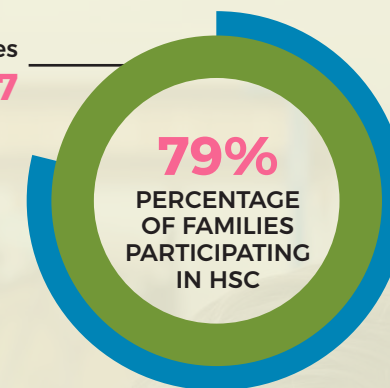
- Health & Nutrition Education
- Positive Discipline/Emotional Wellness
- Parent Leadership Training
- Emergency Preparedness
- Support for children with Disabilities
- Mental Wellness
- School Readiness/Transition
- Adult Education
- Pedestrian Safety
- Child Development
- Post-partum Depression
- Family Goal Setting

2021-2022 PARENT SURVEY HIGHLIGHTS



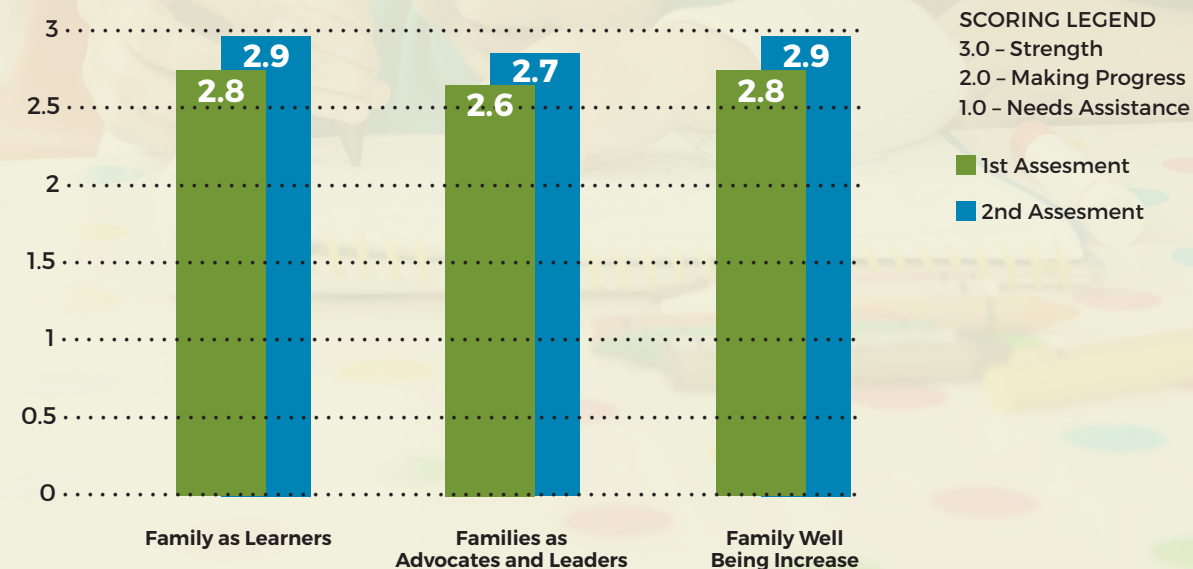
2021-2022 HOME SCHOOL CONNECTION (HSC)

MHSP Total Enrolled Families
657



2021-2022 MHSP FAMILY OUTCOMES

As a result of participation in MHSP parent engagement activities and support, family outcomes assessment demonstrates parents have made measurable gains in the following areas:



MIGRANT HEAD START PROGRAM SITES

MIGRANT HEAD START PROGRAMS CENTRAL OFFICE

Division of Early Education Services

370 Aurora Drive
El Centro, CA 92243
(760) 337-1555 / (760) 337-1478 Fax

BRAWLEY CENTER

1455 East Magnolia Street
Brawley, CA 92227
(760) 344-9083 / (760) 344-9113 FAX

CALEXICO CENTER

1120 East 7th Street
Calexico, CA 92231
(760) 768-3500 / (760) 768-3502 FAX

EL CENTRO CENTER

375 South 1st Street
El Centro, CA 92243
(760) 337-3940 / (760) 370-0405 FAX

MECCA CENTER

62-900 Lincoln Ave, Suite P
Mecca, CA 92254
(760) 863-3350 / (760) 396-9192 FAX

THERMAL CENTER

87-220 Church Street
Thermal, CA 92274
(760) 863-3250 / (760) 399-1840 FAX

For more information on our Migrant Head Start Programs
please visit us at www.rcoe.us/mhs or call us at (760) 337-1555

Find us on  @rcoemhsp

 @rcoemigrantheadstart