



# RIVERSIDE COUNTY OFFICE OF EDUCATION

EDWIN GOMEZ, Ed.D. | County Superintendent of Schools

English Language Proficiency  
Assessments for California  
(ELPAC)

## 2023 Riverside County Summative ELPAC and Summative Alternate ELPAC Report

October 2023



## 2023 Summative English Language Proficiency Assessments for California (ELPAC) Results Riverside County

The Riverside County Office of Education (RCOE) focuses on supporting students, schools, and districts in achieving the RCOE pledge: *Every student in Riverside County will graduate from high school academically and socially prepared for college, the workforce, and civic responsibility.*

### Table of Contents

- Introduction
- Section 1: Riverside County 2023 Summative ELPAC and Summative Alternate ELPAC Overall and Subtest Performance Comparison by Grade Level and Achievement Level
- Section 2: Riverside County Summative ELPAC, 2018-2023 Overall and Subtest Performance Comparison Over Time
- Section 3: List of Districts in Riverside County 2023 Summative ELPAC and Summative Alternate ELPAC Overall Comparison
- Section 4: Comparison to 10 Largest Counties 2023 Summative ELPAC and Summative Alternate ELPAC Overall Comparison

## Introduction

The English Language Proficiency Assessments for California (ELPAC) is the required state test for English language proficiency (ELP) that must be given to students whose primary language is a language other than English. State and federal law require that local educational agencies administer a state test of ELP to eligible students in kindergarten through grade twelve. The California Department of Education (CDE) transitioned from the California English Language Development Test (CELDT) to the ELPAC as the state ELP assessment in 2018. The ELPAC consists of two separate ELP assessments: one for the initial identification of students as English learners (ELs), and a second for the annual summative assessment to measure a student’s progress in learning English and to identify the student’s level of ELP.

The ELPAC is aligned with the 2012 California English Language Development (ELD) Standards. The table below shows how the four ELPAC levels relate to the three proficiency levels described in the ELD Standards.

<b>ELPAC Levels</b>	<b>Level 1</b>	<b>Level 2</b>	<b>Level 3</b>	<b>Level 4</b>
<b>ELD Standards Proficiency Levels</b>	<b>Emerging—Requires substantial linguistic support.</b>	<b>Expanding—Requires moderate linguistic support.</b>	<b>Bridging—Requires light linguistic support.</b>	

Figure 1: ELPAC Levels Aligned to ELD Standards

The State Board of Education (SBE) has approved the use of ELPAC Overall Performance Level (PL) 4 as the statewide standardized ELP criterion for reclassification. Therefore, LEAs shall use Overall PL 4 to determine whether a student has met the ELP assessment criterion. No additional sub scores or criteria should be added to the Overall PL 4 determination. All other reclassification criteria remain locally determined. Additional information for English learner reclassification can be found at <https://www.cde.ca.gov/sp/el/rd/>.

Additional information about ELPAC results can be located at:

- California Department of Education Website: <https://www.cde.ca.gov/ta/tg/ep/>
- ELPAC Website: <https://www.elpac.org/>
- Summative ELPAC Fact Sheet: <https://www.cde.ca.gov/ta/tg/ca/documents/sumelpacfactsheet.pdf>
- [2022-23 ELPAC Information Guide \(DOCX\)](#)

## Alternate ELPAC

The development of the Alternate ELPAC began in 2019, with a statewide operational field test from November 2021 through February 2022. The purpose of the Alternate ELPAC is twofold: the Initial Alternate ELPAC will provide information to determine a student’s initial classification as an English learner (EL) or as initial fluent English proficient (IFEP) and the Summative Alternate ELPAC will provide information on student annual progress toward ELP and support decisions for students to be redesignated fluent English proficient (RFEP).

The Alternate ELPAC is aligned to the [English Language Development Connectors \(DOCX\)](#) and are linked to the 2012 California English Language Development Standards.

The Alternate ELPAC has replaced all locally determined alternate assessments and provides a consistent, standardized measurement of ELP across the state for students with the most significant cognitive disabilities.

The SBE has approved the use of Alternate ELPAC Overall Performance Level (PL) 3 as the statewide standardized ELP criterion for reclassification for students with significant cognitive disabilities that take the Alternate ELPAC. Therefore, LEAs shall use Overall PL 3 to determine whether a student has met the ELP assessment criterion. All other reclassification criteria remain locally determined. Additional information for English learner reclassification can be found at <https://www.cde.ca.gov/sp/el/rd/>.

Additional information about the Alternate ELPAC:

- Alternate ELPAC Website: <https://www.cde.ca.gov/ta/tg/ep/alternateelpac.asp>
- Alternate ELPAC Administration Resources: <https://www.elpac.org/test-administration/summative-alternate/>
- ELPAC Sample Score Reports: <https://www.elpac.org/test-administration/reporting/sample-student-score-reports/>

## Section 1

### Riverside County 2023 Summative ELPAC and Summative Alternate ELPAC Overall and Subtest Performance Comparison by Grade Level and Achievement Level

#### Summative ELPAC Reporting Level Descriptors

Level	Description
4	<p>Students at this level have <b>well developed</b> English skills.</p> <ul style="list-style-type: none"> <li>▪ They can usually use English to learn new things in school and to interact in social situations.</li> <li>▪ They may occasionally need help using English.</li> </ul>
3	<p>Students at this level have <b>moderately developed</b> English skills.</p> <ul style="list-style-type: none"> <li>▪ They can sometimes use English to learn new things in school and to interact in social situations.</li> <li>▪ They may need help using English to communicate on less-familiar school topics and in less-familiar social situations.</li> </ul>
2	<p>Students at this level have <b>somewhat developed</b> English skills.</p> <ul style="list-style-type: none"> <li>▪ They usually need help using English to learn new things at school and to interact in social situations.</li> <li>▪ They can often use English for simple communication.</li> </ul>
1	<p>Students at this level are at a <b>beginning stage</b> of developing English skills.</p> <ul style="list-style-type: none"> <li>▪ They usually need substantial help using English to learn new things at school and to interact in social situations.</li> <li>▪ They may know some English words and phrases.</li> </ul>

Results in this report are displayed based on overall student scores on the ELPAC Summative Assessment. In addition, results are displayed based on ELPAC subtests: Oral Language and Written Language. The oral language subtests are inclusive of listening and speaking portions of the ELPAC assessment while the written language includes both reading and writing.

---

**Summative Alternate ELPAC Reporting Level Descriptors**

<b>Level</b>	<b>Description</b>
3	<p data-bbox="325 300 871 341"><b>Fluent English Proficient</b>—LEVEL 3 (660–699)</p> <ul data-bbox="367 341 1917 462" style="list-style-type: none"> <li data-bbox="367 341 1354 373">▪ Students at this level have sufficient English skills to communicate and learn in school.</li> <li data-bbox="367 373 1917 462">▪ They may need occasional help with English in order to learn grade-level information that has been modified for students with the most significant cognitive disabilities.</li> </ul>
2	<p data-bbox="325 462 934 503"><b>Intermediate English Learner</b>—LEVEL 2 (644–659)</p> <ul data-bbox="367 503 1917 625" style="list-style-type: none"> <li data-bbox="367 503 1354 535">▪ Students at this level can sometimes use English to communicate and learn in school.</li> <li data-bbox="367 535 1917 625">▪ They may need frequent help with English in order to learn grade-level information that has been modified for students with the most significant cognitive disabilities.</li> </ul>
1	<p data-bbox="325 625 871 665"><b>Novice English Learner</b>—LEVEL 1 (601–643)</p> <ul data-bbox="367 665 1917 745" style="list-style-type: none"> <li data-bbox="367 665 1627 698">▪ Students at this level are beginning to develop the English skills they need to communicate and learn in school.</li> <li data-bbox="367 698 1917 745">▪ They may need substantial help with English in order to learn grade-level information that has been modified for students with the most significant cognitive disabilities.</li> </ul>

---

Subtest scores are not provided for the Summative Alternate ELPAC.

### 2022–23 Summative ELPAC Scores

#### Riverside County Overall and Subtest Performance Comparison

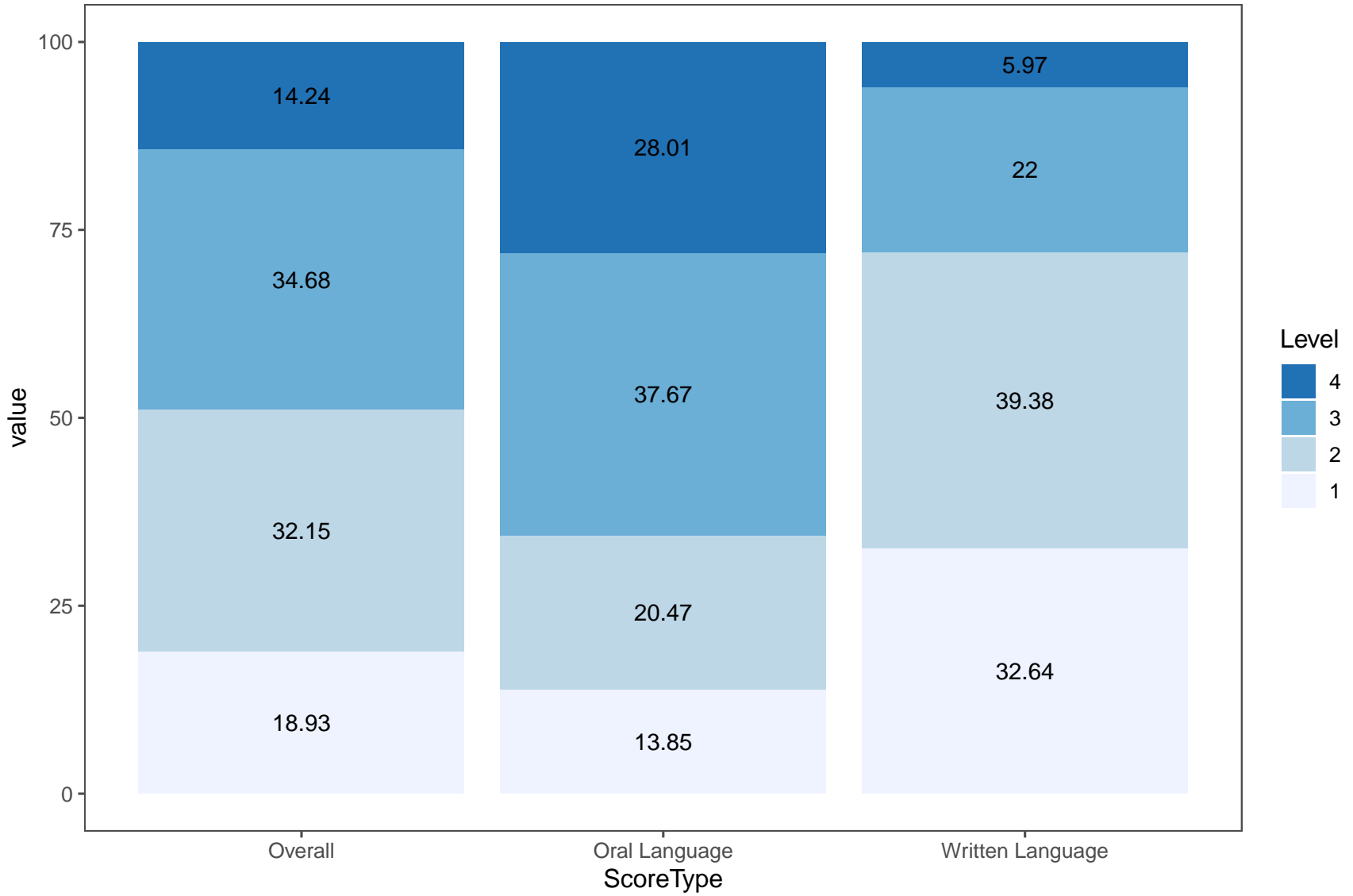


Table 3: Riverside County Overall and Subtest Performance Comparison

Score Type	Tested	% Level 1	% Level 2	% Level 3	% Level 4
Overall	70289	18.93	32.15	34.68	14.24
Oral Language	70289	13.85	20.47	37.67	28.01
Written Language	70289	32.64	39.38	22.00	5.97



### 2022–23 Summative ELPAC Overall Scores Riverside County Grade Level Performance Comparison

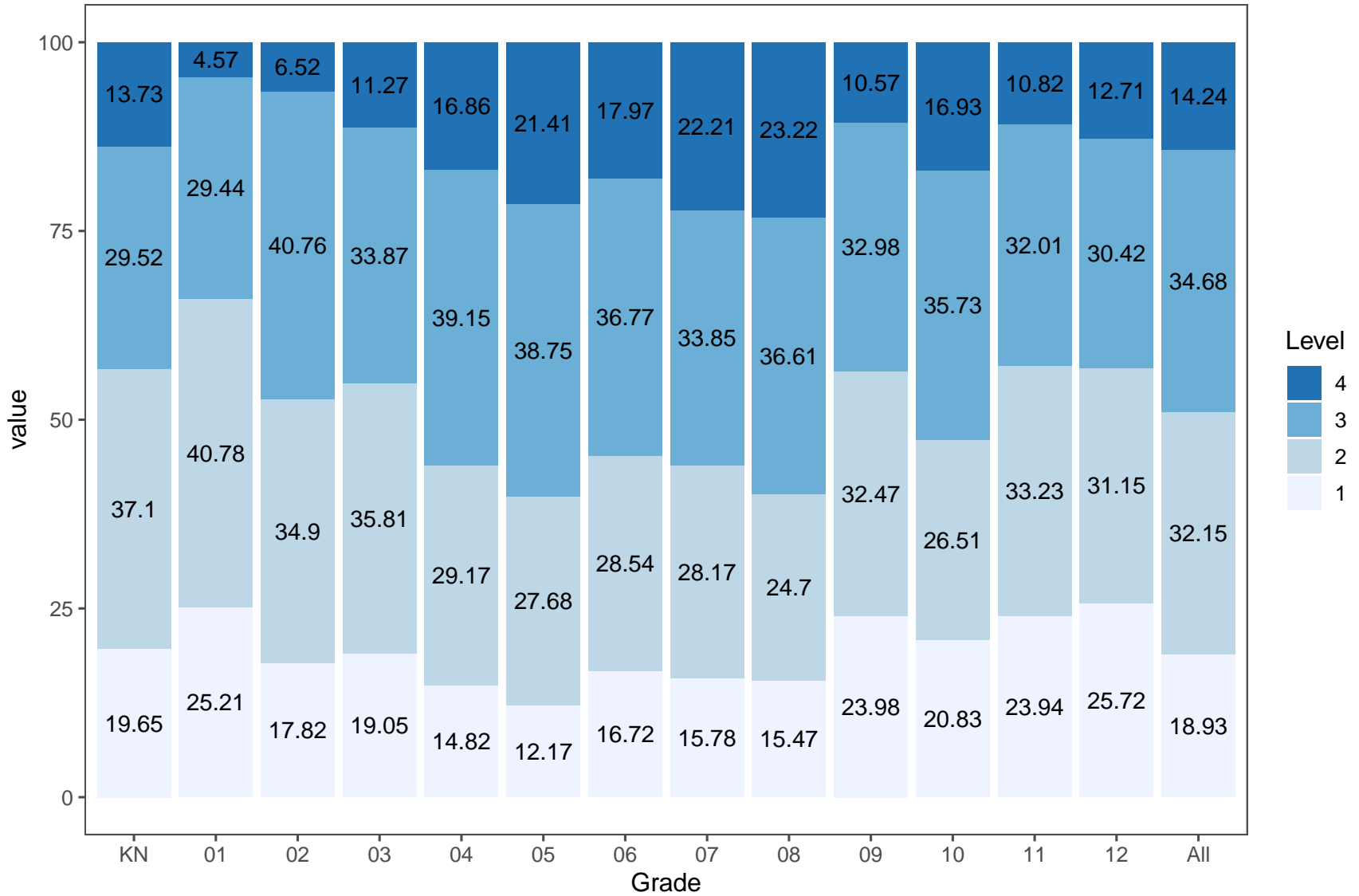


Table 4: ELPAC Overall Scores - Riverside County Grade Level Performance Comparison

Grade	Tested	% Level 1	% Level 2	% Level 3	% Level 4
KN	8421	19.65	37.10	29.52	13.73
01	6287	25.21	40.78	29.44	4.57
02	6412	17.82	34.90	40.76	6.52
03	6594	19.05	35.81	33.87	11.27
04	6378	14.82	29.17	39.15	16.86
05	6160	12.17	27.68	38.75	21.41
06	5340	16.72	28.54	36.77	17.97
07	4722	15.78	28.17	33.85	22.21
08	4332	15.47	24.70	36.61	23.22
09	4288	23.98	32.47	32.98	10.57
10	4215	20.83	26.51	35.73	16.93
11	4104	23.94	33.23	32.01	10.82
12	3036	25.72	31.15	30.42	12.71
All	70289	18.93	32.15	34.68	14.24

### 2022–23 Summative ELPAC Oral Language Scores Riverside County Grade Level Performance Comparison

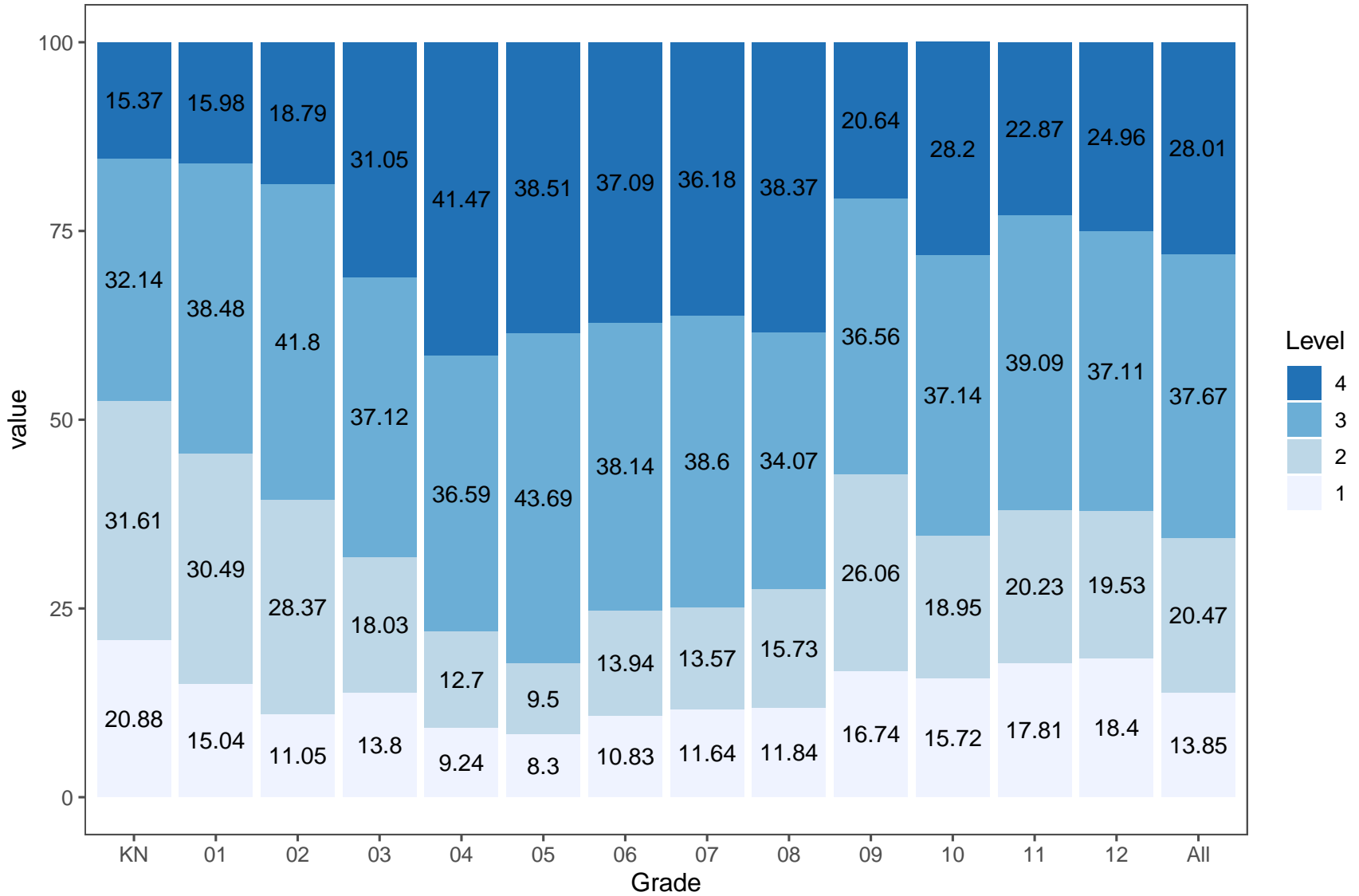


Table 5: ELPAC Oral Language Scores - Riverside County Grade Level Performance Comparison

Grade	Tested	% Level 1	% Level 2	% Level 3	% Level 4
KN	8421	20.88	31.61	32.14	15.37
01	6287	15.04	30.49	38.48	15.98
02	6412	11.05	28.37	41.80	18.79
03	6594	13.80	18.03	37.12	31.05
04	6378	9.24	12.70	36.59	41.47
05	6160	8.30	9.50	43.69	38.51
06	5340	10.83	13.94	38.14	37.09
07	4722	11.64	13.57	38.60	36.18
08	4332	11.84	15.73	34.07	38.37
09	4288	16.74	26.06	36.56	20.64
10	4215	15.72	18.95	37.14	28.20
11	4104	17.81	20.23	39.09	22.87
12	3036	18.40	19.53	37.11	24.96
All	70289	13.85	20.47	37.67	28.01

### 2022–23 Summative ELPAC Written Language Scores Riverside County Grade Level Performance Comparison

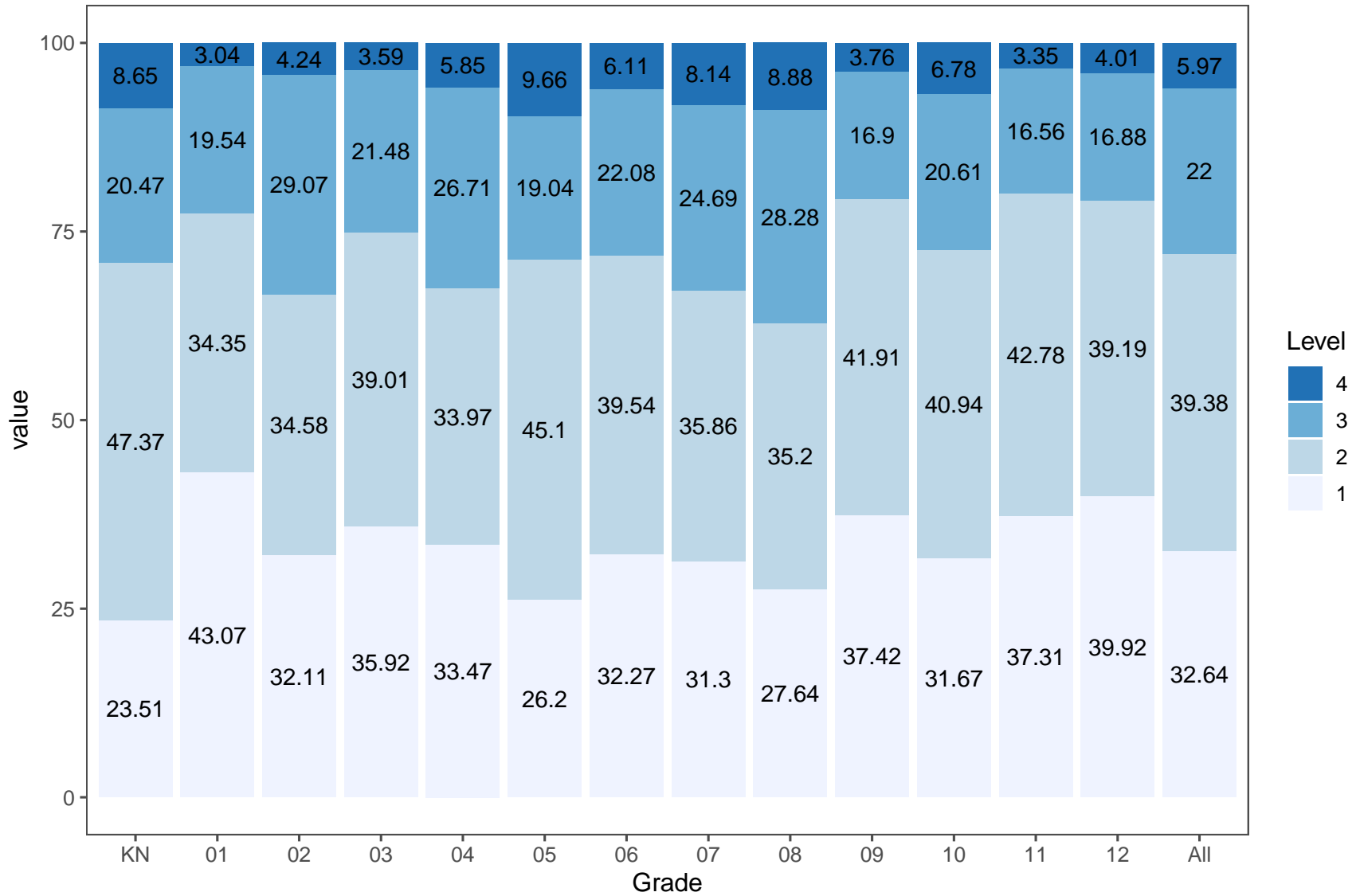


Table 6: ELPAC Written Language Scores - Riverside County Grade Level Performance Comparison

Grade	Tested	% Level 1	% Level 2	% Level 3	% Level 4
KN	8421	23.51	47.37	20.47	8.65
01	6287	43.07	34.35	19.54	3.04
02	6412	32.11	34.58	29.07	4.24
03	6594	35.92	39.01	21.48	3.59
04	6378	33.47	33.97	26.71	5.85
05	6160	26.20	45.10	19.04	9.66
06	5340	32.27	39.54	22.08	6.11
07	4722	31.30	35.86	24.69	8.14
08	4332	27.64	35.20	28.28	8.88
09	4288	37.42	41.91	16.90	3.76
10	4215	31.67	40.94	20.61	6.78
11	4104	37.31	42.78	16.56	3.35
12	3036	39.92	39.19	16.88	4.01
All	70289	32.64	39.38	22.00	5.97

## 2022–23 Summative Alternative ELPAC Overall Scores

### Riverside County Grade Level Performance Comparison

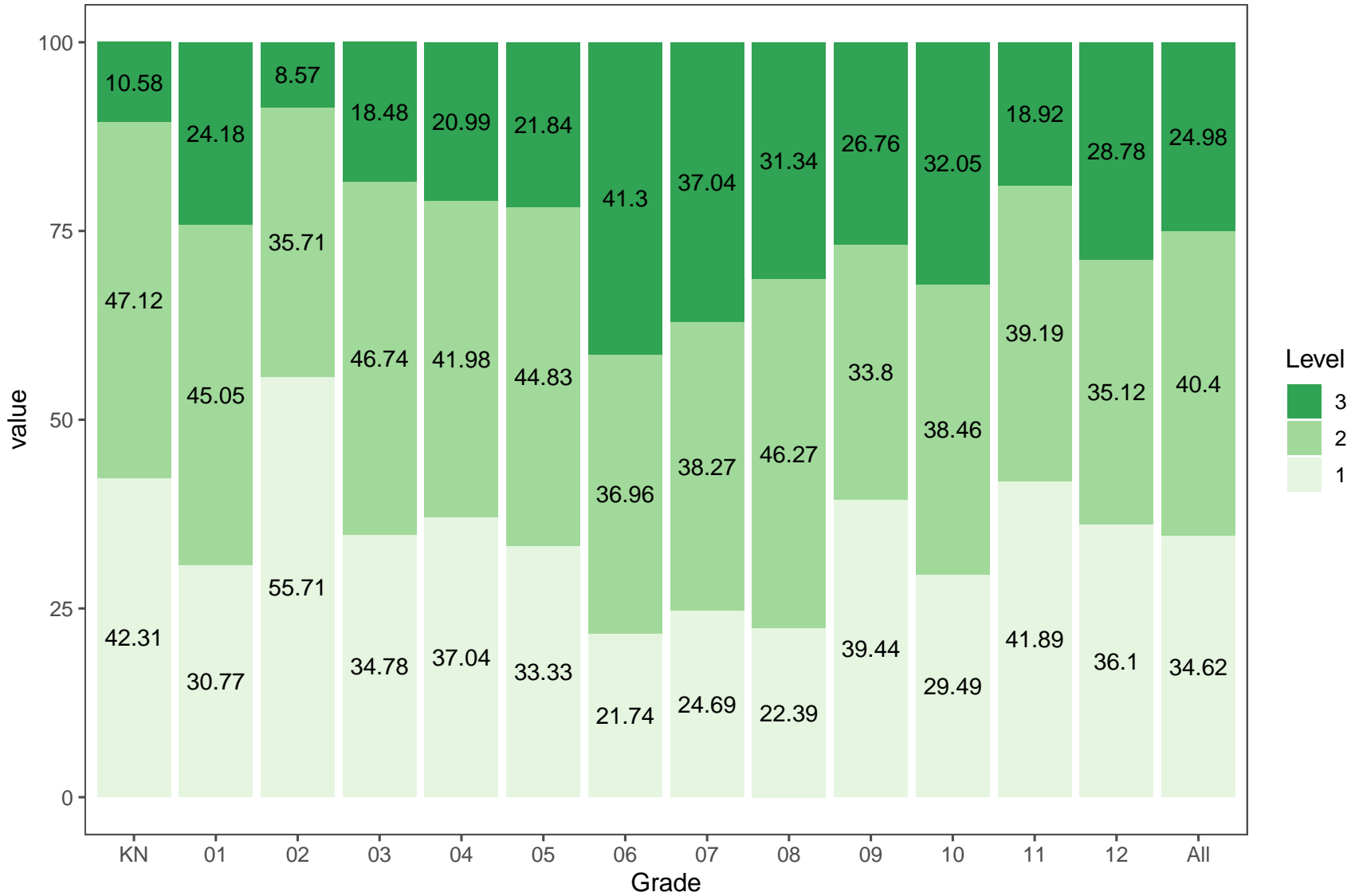


Table 7: 2022-23 Summative Alternative ELPAC Overall Scores - Riverside County Grade Level Performance Comparison

Grade	Tested	% Level 1	% Level 2	% Level 3
KN	108	42.31	47.12	10.58
01	93	30.77	45.05	24.18
02	70	55.71	35.71	8.57
03	94	34.78	46.74	18.48
04	84	37.04	41.98	20.99
05	88	33.33	44.83	21.84
06	92	21.74	36.96	41.30
07	87	24.69	38.27	37.04
08	68	22.39	46.27	31.34
09	74	39.44	33.80	26.76
10	82	29.49	38.46	32.05
11	78	41.89	39.19	18.92
12	208	36.10	35.12	28.78
All	1226	34.62	40.40	24.98



## **Section 2**

### **Riverside County Summative ELPAC, 2018-2023 Overall and Subtest Performance Comparison Over Time**

Overall and Subtest performance levels are provided for the Summative ELPAC for the years 2018 through 2023. Testing was suspended in 2020 due to the COVID-19 pandemic resulting in school closures in spring 2020.

## 2018–22 Summative ELPAC Scores

### Riverside County Overall and Subtest Performance Comparison Over Time

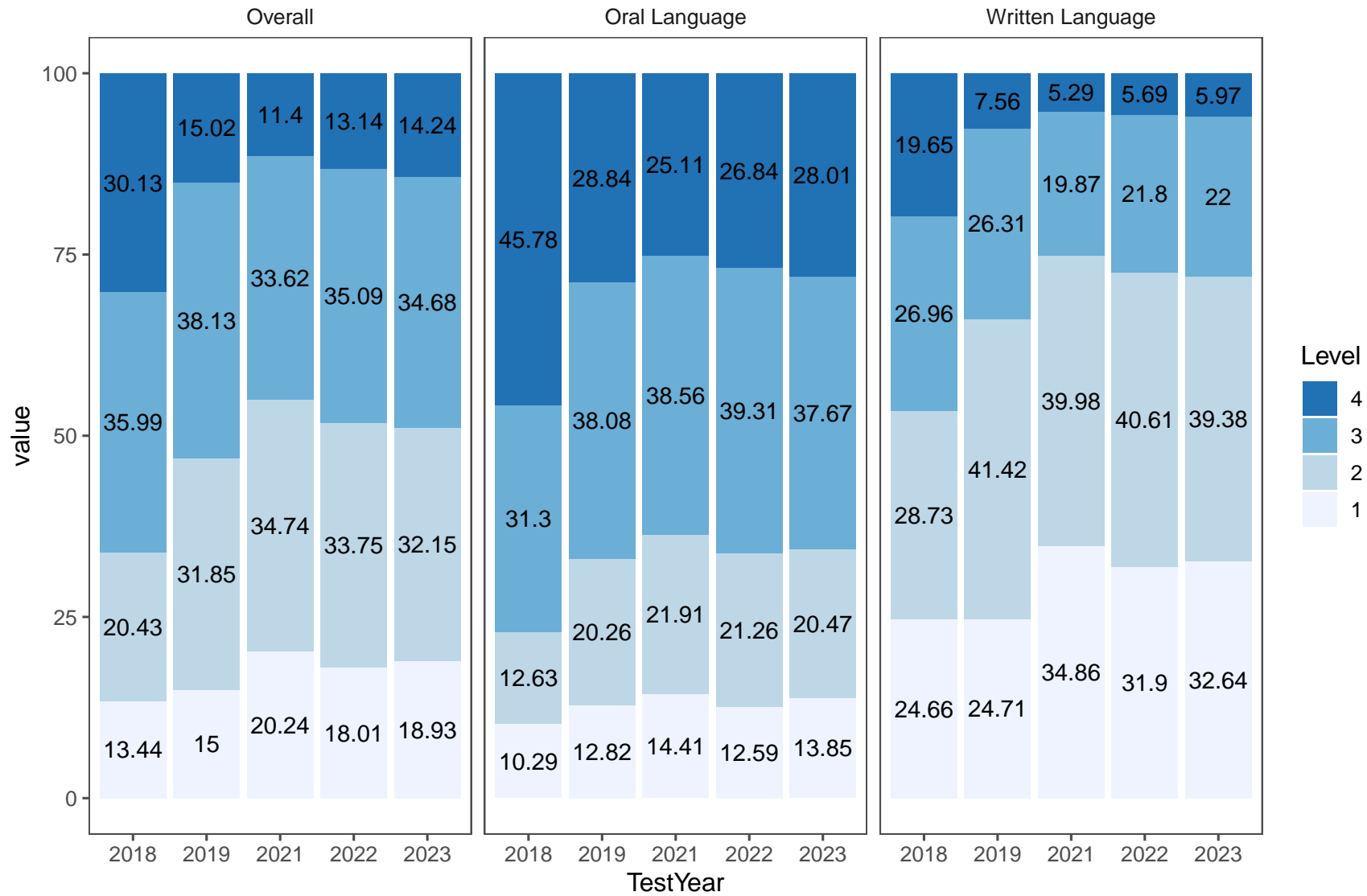


Table 8: 2018-22 Summative ELPAC Scores - Riverside County Overall and Subtest Performance Comparison Over Time

ScoreType	TestYear	Tested	% Level 1	% Level 2	% Level 3	% Level 4
Overall	2018	74355	13.44	20.43	35.99	30.13
Overall	2019	69697	15.00	31.85	38.13	15.02
Overall	2021	67290	20.24	34.74	33.62	11.40
Overall	2022	71097	18.01	33.75	35.09	13.14
Overall	2023	70289	18.93	32.15	34.68	14.24
Oral Language	2018	74355	10.29	12.63	31.30	45.78
Oral Language	2019	69697	12.82	20.26	38.08	28.84
Oral Language	2021	67290	14.41	21.91	38.56	25.11
Oral Language	2022	71097	12.59	21.26	39.31	26.84
Oral Language	2023	70289	13.85	20.47	37.67	28.01
Written Language	2018	74355	24.66	28.73	26.96	19.65
Written Language	2019	69697	24.71	41.42	26.31	7.56
Written Language	2021	67290	34.86	39.98	19.87	5.29
Written Language	2022	71097	31.90	40.61	21.80	5.69
Written Language	2023	70289	32.64	39.38	22.00	5.97

## Section 3

### List of Districts in Riverside County 2023 Summative ELPAC and Summative Alternate ELPAC Overall Comparison

There is great variance in the size and demographics of the school districts within Riverside County. The largest district, Corona-Norco Unified School district served almost 51,000 students in the 2022-23 school year. The smallest district, Desert Center Unified, had an enrollment of 26 students in the 2022-23 school year (Source: [CDE Dataquest](#)).

Reviewing assessment results for schools and districts within Riverside County allows districts to determine how they perform in comparison to other districts on Summative ELPAC and Summative Alternate ELPAC statewide assessments. This report also permits school and district leaders to determine how their district is faring in comparison to similar districts if demographics are taken into consideration.

## 2022–23 Summative ELPAC Overall Scores

Districts in Riverside County

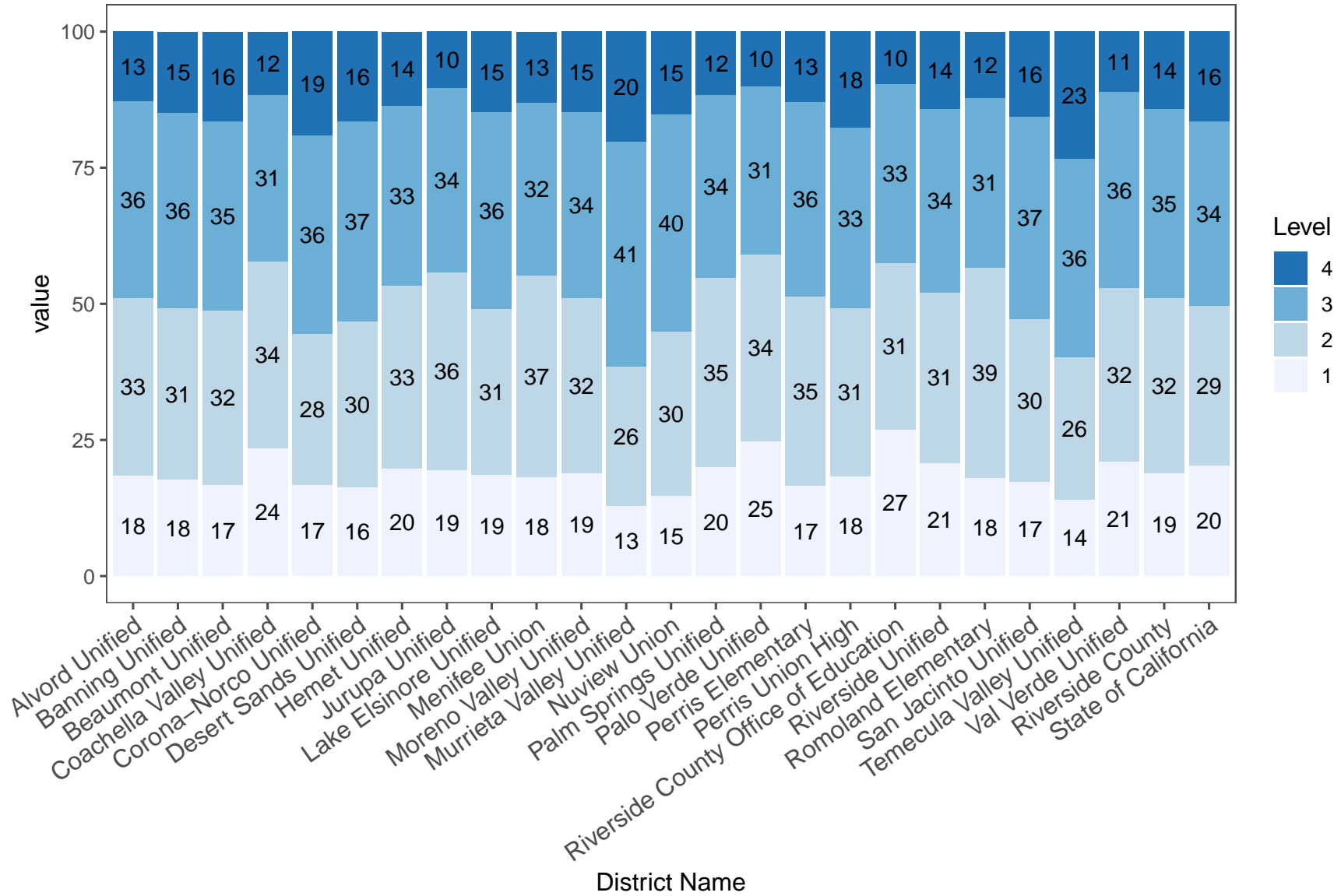


Table 9: ELPAC Overall Scores - Districts in Riverside County

District Name	Tested	% Level 1	% Level 2	% Level 3	% Level 4
Alvord Unified	4187	18.48	32.63	36.10	12.79
Banning Unified	809	17.70	31.44	36.01	14.85
Beaumont Unified	934	16.86	31.90	34.80	16.43
Coachella Valley Unified	6963	23.54	34.19	30.70	11.57
Corona-Norco Unified	6993	16.81	27.62	36.45	19.12
Desert Sands Unified	5214	16.37	30.39	36.79	16.45
Hemet Unified	2965	19.86	33.48	33.07	13.58
Jurupa Unified	5130	19.47	36.30	33.94	10.30
Lake Elsinore Unified	2386	18.57	30.55	36.13	14.75
Menifee Union	946	18.18	37.00	31.82	13.00
Moreno Valley Unified	6144	18.87	32.21	34.18	14.74
Murrieta Valley Unified	1180	12.97	25.51	41.36	20.17
Nuview Union	475	14.77	30.17	39.87	15.19
Palm Springs Unified	5670	19.96	34.88	33.52	11.63
Palo Verde Unified	198	24.75	34.34	30.81	10.10
Perris Elementary	2394	16.54	34.84	35.71	12.91
Perris Union High	1692	18.38	30.82	33.14	17.66
Riverside County Office of Education	219	26.94	30.59	32.88	9.59
Riverside Unified	6265	20.79	31.38	33.62	14.22
Romoland Elementary	683	18.01	38.65	31.19	12.15
San Jacinto Unified	1826	17.26	29.97	37.15	15.62
Temecula Valley Unified	1343	14.07	26.14	36.49	23.31
Val Verde Unified	4035	21.06	31.85	36.02	11.06
Riverside County	70289	18.93	32.15	34.68	14.24
State of California	1051695	20.33	29.40	33.77	16.50

### 2022–23 Summative Alternative ELPAC Overall Scores

Districts in Riverside County

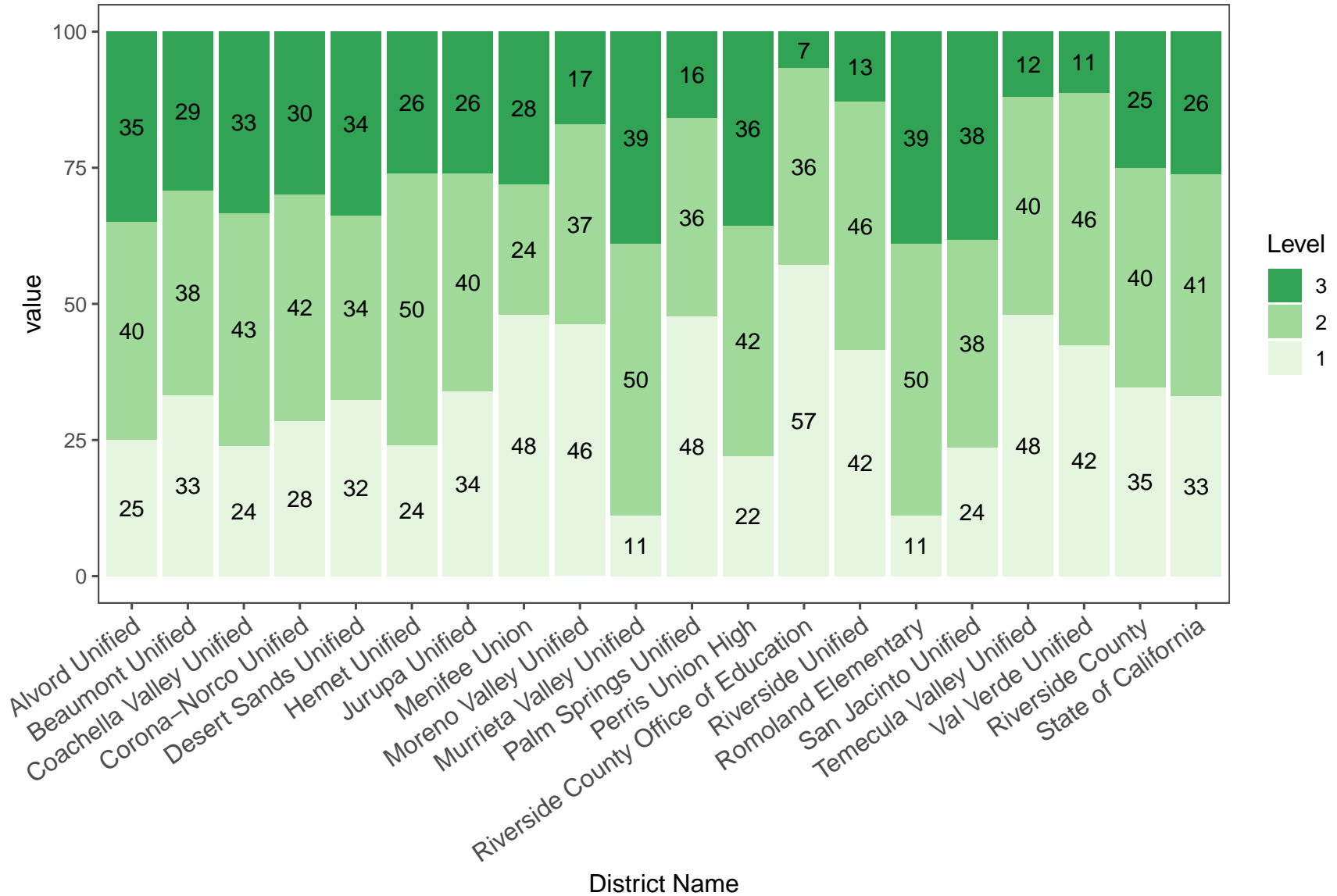


Table 10: Summative Alternative ELPAC Overall Scores - Districts in Riverside County

District Name	Tested	% Level 1	% Level 2	% Level 3
Alvord Unified	60	25.00	40.00	35.00
Beaumont Unified	25	33.33	37.50	29.17
Coachella Valley Unified	118	23.93	42.74	33.33
Corona-Norco Unified	146	28.47	41.67	29.86
Desert Sands Unified	137	32.33	33.83	33.83
Hemet Unified	51	24.00	50.00	26.00
Jurupa Unified	50	34.00	40.00	26.00
Menifee Union	25	48.00	24.00	28.00
Moreno Valley Unified	45	46.34	36.59	17.07
Murrieta Valley Unified	20	11.11	50.00	38.89
Palm Springs Unified	48	47.73	36.36	15.91
Perris Union High	62	22.03	42.37	35.59
Riverside County Office of Education	123	57.14	36.13	6.72
Riverside Unified	104	41.58	45.54	12.87
Romoland Elementary	18	11.11	50.00	38.89
San Jacinto Unified	56	23.64	38.18	38.18
Temecula Valley Unified	26	48.00	40.00	12.00
Val Verde Unified	80	42.50	46.25	11.25
Riverside County	1226	34.62	40.40	24.98
State of California	17773	33.08	40.80	26.13



## Section 4

### **Comparison to 10 Largest Counties 2023 Summative ELPAC and Summative Alternate ELPAC Overall Comparison**

Riverside County is one of the largest counties in the state of California. In an effort to determine how Riverside County is performing on statewide standardized assessments as compared to other large counties in CA, this report includes Summative ELPAC and Summative Alternate ELPAC assessment results for ten comparison counties in CA. Counties include Alameda, Fresno, Kern, Los Angeles, Orange, Sacramento, San Bernardino, San Diego, and Santa Clara.

### 2022–23 Summative ELPAC Overall Scores

#### Top Ten Largest Counties in State of California

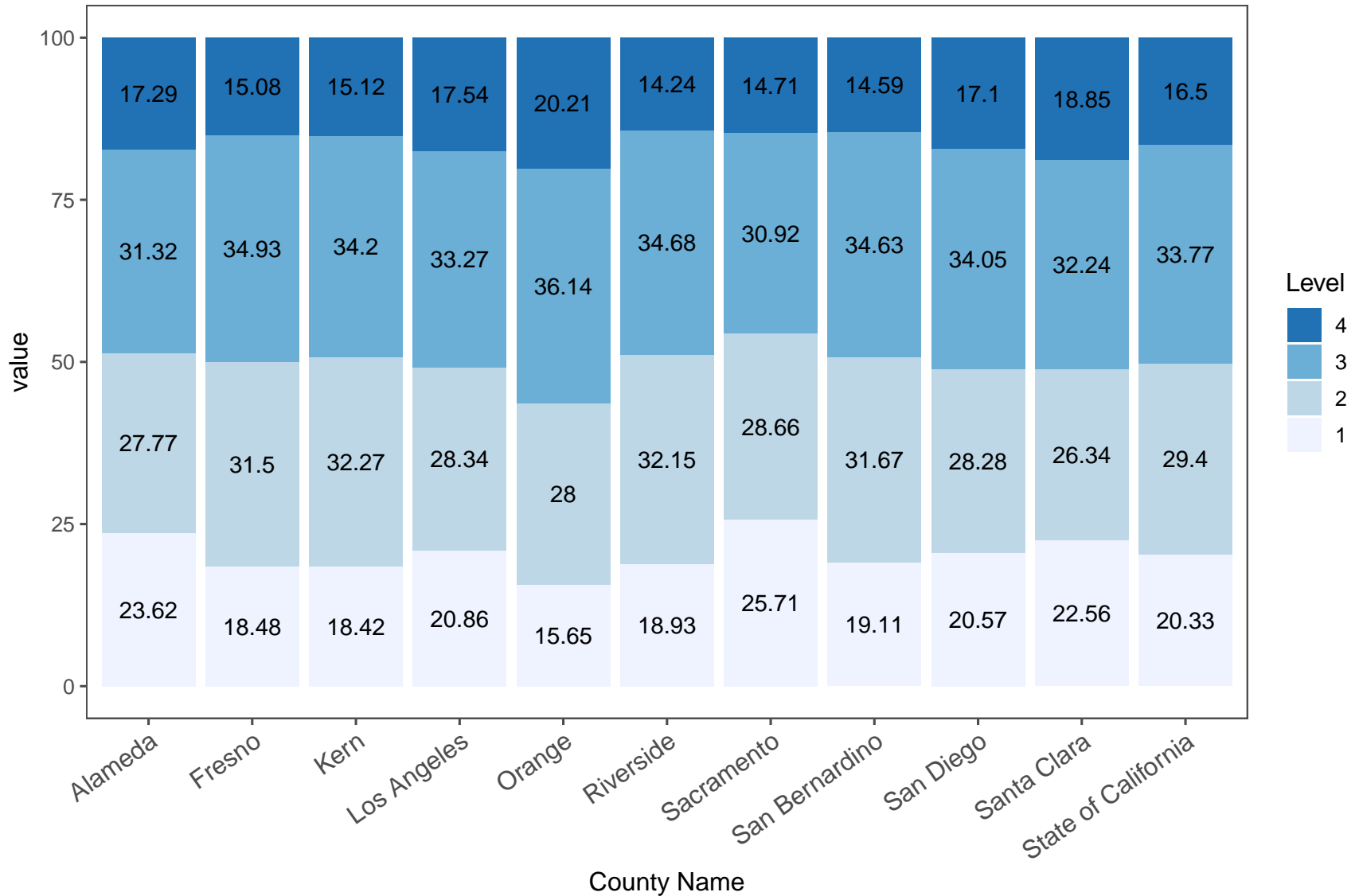


Table 11: ELPAC Overall Scores - Counties in State of California

County Name	Tested	% Level 1	% Level 2	% Level 3	% Level 4
Alameda	39774	23.62	27.77	31.32	17.29
Fresno	37185	18.48	31.50	34.93	15.08
Kern	34996	18.42	32.27	34.20	15.12
Los Angeles	231770	20.86	28.34	33.27	17.54
Orange	84510	15.65	28.00	36.14	20.21
Riverside	70289	18.93	32.15	34.68	14.24
Sacramento	43208	25.71	28.66	30.92	14.71
San Bernardino	59234	19.11	31.67	34.63	14.59
San Diego	81682	20.57	28.28	34.05	17.10
Santa Clara	49505	22.56	26.34	32.24	18.85
State of California	1051695	20.33	29.40	33.77	16.50

### 2022–23 Summative Alternative ELPAC Overall Scores

Top Ten Largest Counties in State of California

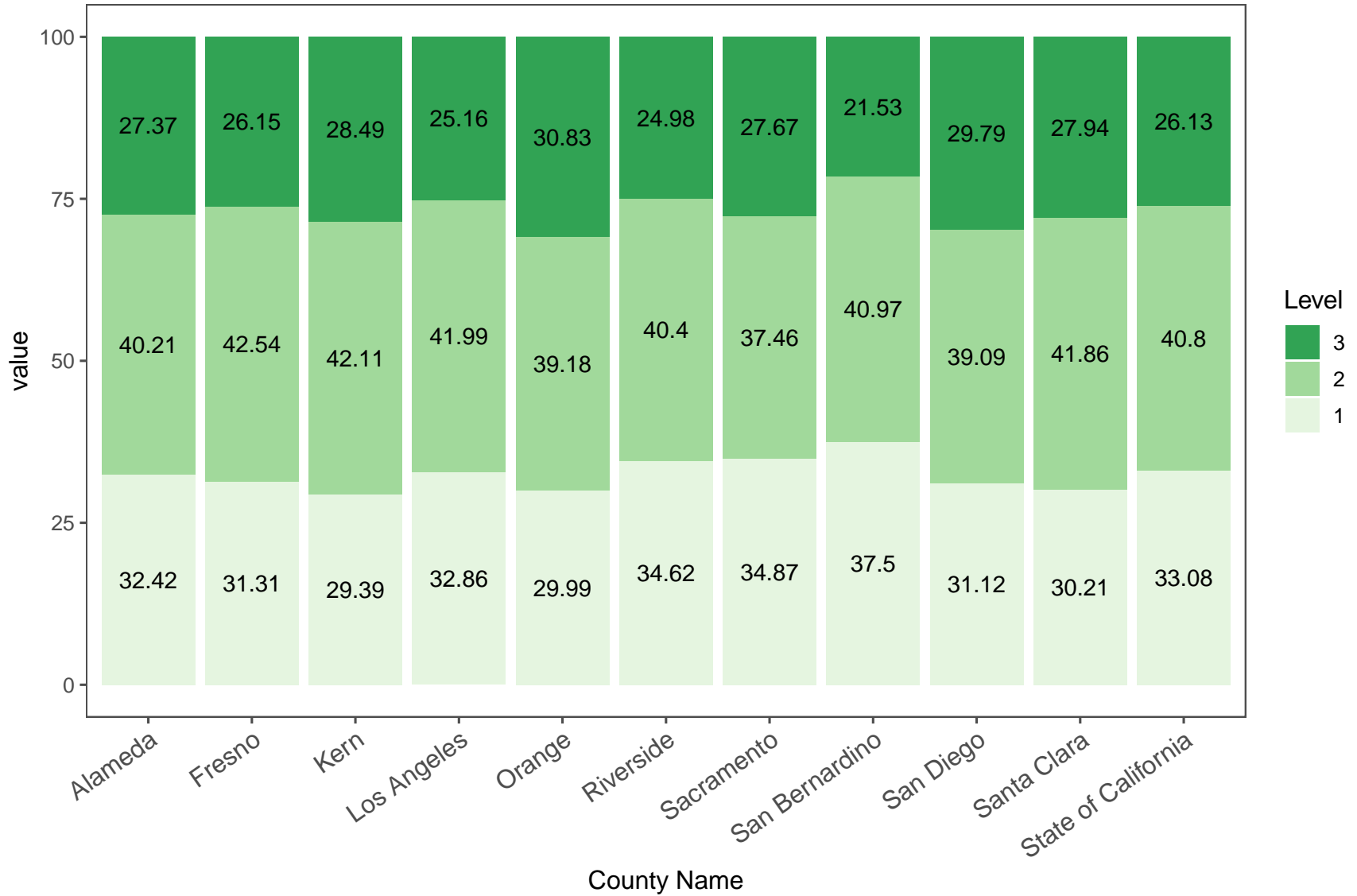


Table 12: Summative Alternative ELPAC Overall Scores - Top Ten Largest Counties in State of California

County Name	Tested	% Level 1	% Level 2	% Level 3
Alameda	669	32.42	40.21	27.37
Fresno	552	31.31	42.54	26.15
Kern	562	29.39	42.11	28.49
Los Angeles	4484	32.86	41.99	25.16
Orange	1590	29.99	39.18	30.83
Riverside	1226	34.62	40.40	24.98
Sacramento	914	34.87	37.46	27.67
San Bernardino	1034	37.50	40.97	21.53
San Diego	1382	31.12	39.09	29.79
Santa Clara	1073	30.21	41.86	27.94
State of California	17773	33.08	40.80	26.13